



# LAKES PRECISION<sup>INC.</sup>

*Your Global Source for Wire Processing Perishable Tooling*

## ERASER MACHINE SERIES

THIS SECTION CONTAINS BLADES FOR THE FOLLOWING MACHINE SERIES:

□ HCA 10

□ LS10 / U.K. CS 2000

□ WC-500

**Your Global Source for Wire Processing Perishable Tooling**

[www.lakesprecision.com](http://www.lakesprecision.com)

# ERASER HCA 10 MACHINE SERIES

CUT-OFF BLADES CLASS: CL-A

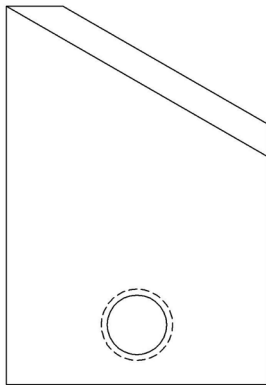


## CUT-OFF BLADES

Sharp edge is ground to a flat collinear angle.

Characteristics: Sharp edges cut by shearing action. This class of blade was designed to allow multiple conductor wire to be processed without deforming the wire. The main advantage of this class is the ability to process many different wire gauges with the same blades.

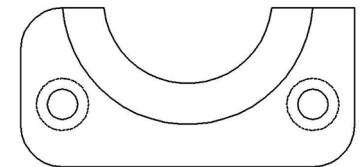
- TC Coating Available -



123132  
UPPER BLADE

| ITEM NUMBER | DESCRIPTION              | OEM #  |
|-------------|--------------------------|--------|
| 123132      | MOVABLE UPPER CUT-OFF    | IR5258 |
| 123133      | STATIONARY LOWER CUT-OFF | IR8743 |

123132 / 123133  
CUT-OFF BLADES



123133  
LOWER BLADE

### DIE TYPE BLADES

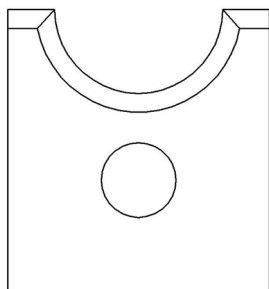
The die-type blade has a fixed shut height. The cutting edge is precisely drilled to an exact radius dimension for the conductor diameter. The insulation wall is contained in a counter-bore drilled around cutting edge.

This type of blade is the most exactly matched blade to the wire specification, giving a very precise insulation removal. This is excellent for removal of extremely thin insulation walls or where the outer jacket is oval shaped, and is also very useful for processing solid conductor insulated wire. Normally this is the blade of choice for SJT, SVT, SJO, coaxial cable outer jacket removal, and many round multi-conductor wires.

Die blades are manufactured to the exact wire specifications. Blades can be produced for most any wire.

- For a specific blade size or application, contact Lakes Precision, Inc. -

- *TC Coating Available* -



122355

| ITEM NUMBER | OEM #  | DESCRIPTION  |
|-------------|--------|--------------|
| 122355-1    | IR1707 | 2.0 DIAMETER |
| 122355-2    | IR1708 | 2.7 DIAMETER |
| 122355-3    | IR1709 | 3.3 DIAMETER |
| 122355-4    | IR1710 | 3.7 DIAMETER |
| 122355-25   | -----  | 4.6 DIAMETER |
| 122355-5    | IR1711 | 4.8 DIAMETER |
| 122355-6    | IR1712 | 5.4 DIAMETER |
| 122355-24   | -----  | 6.0 DIAMETER |
| 122355-7    | IR1713 | 6.2 DIAMETER |
| 122355-22   | -----  | 6.6 DIAMETER |
| 122355-23   | -----  | 7.0 DIAMETER |
| 122355-8    | IR1714 | 7.4 DIAMETER |
| 122355-9    | IR1715 | 8.5 DIAMETER |
| 122355-26   | -----  | 8.8 DIAMETER |
| 122355-10   | IR1716 | 9.5 DIAMETER |

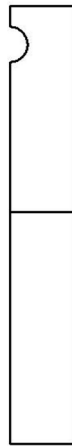
| ITEM NUMBER | OEM #  | DESCRIPTION   |
|-------------|--------|---------------|
| 122355-27   | -----  | 9.8 DIAMETER  |
| 122355-11   | IR1717 | 10.7 DIAMETER |
| 122355-28   | -----  | 11.0 DIAMETER |
| 122355-12   | IR1718 | 11.5 DIAMETER |
| 122355-29   | -----  | 11.8 DIAMETER |
| 122355-13   | IR1719 | 12.7 DIAMETER |
| 122355-14   | IR1720 | 14.3 DIAMETER |
| 122355-15   | IR1721 | 15.9 DIAMETER |
| 122355-16   | IR1722 | 18.3 DIAMETER |
| 122355-17   | IR1723 | 20.2 DIAMETER |
| 122355-18   | IR1724 | 22.2 DIAMETER |
| 122355-19   | IR1725 | 24.2 DIAMETER |
| 122355-20   | IR1726 | 26.2 DIAMETER |
| 122355-21   | IR1727 | 28.5 DIAMETER |
| 122355-30   | -----  | 20.1 DIAMETER |
| 122355-31   | -----  | 30.1 DIAMETER |

### CUT BLADE

Sharp edge is ground to a flat collinear angle.

**Characteristics:** Sharp edges cut by shearing action. This class of blade was designed to allow multiple conductor wire to be processed without deforming the wire. The main advantage of this class is the ability to process many different wire gauges with the same blades.

*- TC Coating Available -*



122446

| ITEM NUMBER | MARK  | DESCRIPTION |
|-------------|-------|-------------|
| 122446      | ----- | WC-500 CUT  |