



# LAKES PRECISION<sup>INC.</sup>

*Your Global Source for Wire Processing Perishable Tooling*

## **PRO.EFF MACHINE SERIES**

*THIS SECTION CONTAINS BLADES FOR PRO.EFF ISO-STRIP 15 / 65 MACHINE SERIES*

**Your Global Source for Wire Processing Perishable Tooling**

[www.lakesprecision.com](http://www.lakesprecision.com)

### DIE TYPE BLADES

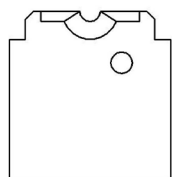
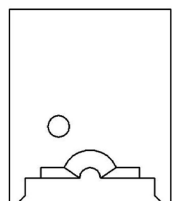
The die-type blade has a fixed shut height. The cutting edge is precisely drilled to an exact radius dimension for the conductor diameter.

This type of blade is the most exactly matched blade to the wire specification, giving a very precise insulation removal. This is excellent for removal of extremely thin insulation walls or where the outer jacket is oval shaped, and is also very useful for processing solid conductor insulated wire. Normally this is the blade of choice for SJT, SVT, SJO, coaxial cable outer jacket removal, and many round multi-conductor wires.

Die blades are manufactured to the exact wire specifications. Blades can be produced for most any wire.

- For more information on these blades, contact Lakes Precision, Inc. -

- TC Coating Available -



123006-XX

MM SIZE	ITEM NUMBER	MM SIZE	ITEM NUMBER	MM SIZE	ITEM NUMBER	MM SIZE	ITEM NUMBER	MM SIZE	ITEM NUMBER
0.4	123006-0.4	2.3	123006-2.3	4.2	123006-4.2	6.1	123006-6.1	8.0	123006-8.0
0.5	123006-0.5	2.4	123006-2.4	4.3	123006-4.3	6.2	123006-6.2	8.1	123006-8.1
0.6	123006-0.6	2.5	123006-2.5	4.4	123006-4.4	6.3	123006-6.3	8.2	123006-8.2
0.7	123006-0.7	2.6	123006-2.6	4.5	123006-4.5	6.4	123006-6.4	8.3	123006-8.3
0.8	123006-0.8	2.7	123006-2.7	4.6	123006-4.6	6.5	123006-6.5	8.4	123006-8.4
0.9	123006-0.9	2.8	123006-2.8	4.7	123006-4.7	6.6	123006-6.6	8.5	123006-8.5
1.0	123006-1.0	2.9	123006-2.9	4.8	123006-4.8	6.7	123006-6.7	8.6	123006-8.6
1.1	123006-1.1	3.0	123006-3.0	4.9	123006-4.9	6.8	123006-6.8	8.7	123006-8.7
1.2	123006-1.2	3.1	123006-3.1	5.0	123006-5.0	6.9	123006-6.9	8.8	123006-8.8
1.3	123006-1.3	3.2	123006-3.2	5.1	123006-5.1	7.0	123006-7.0	8.9	123006-8.9
1.4	123006-1.4	3.3	123006-3.3	5.2	123006-5.2	7.1	123006-7.1	9.0	123006-9.0
1.5	123006-1.5	3.4	123006-3.4	5.3	123006-5.3	7.2	123006-7.2	9.1	123006-9.1
1.6	123006-1.6	3.5	123006-3.5	5.4	123006-5.4	7.3	123006-7.3	9.2	123006-9.2
1.7	123006-1.7	3.6	123006-3.6	5.5	123006-5.5	7.4	123006-7.4	9.3	123006-9.3
1.8	123006-1.8	3.7	123006-3.7	5.6	123006-5.6	7.5	123006-7.5	9.4	123006-9.4
1.9	123006-1.9	3.8	123006-3.8	5.7	123006-5.7	7.6	123006-7.6	9.5	123006-9.5
2.0	123006-2.0	3.9	123006-3.9	5.8	123006-5.8	7.7	123006-7.7	9.6	123006-9.6
2.1	123006-2.1	4.0	123006-4.0	5.9	123006-5.9	7.8	123006-7.8	9.7	123006-9.7
2.2	123006-2.2	4.1	123006-4.1	6.0	123006-6.0	7.9	123006-7.9	9.8	123006-9.8
								9.9	123006-9.9

• THREE LAKES, WI ( 715 ) 546-3070 • CONTACT LAKES PRECISION • EL PASO, TX ( 915 ) 856-6606 •

• EMAIL: [BLADES@LAKESPRECISION.COM](mailto:BLADES@LAKESPRECISION.COM) •

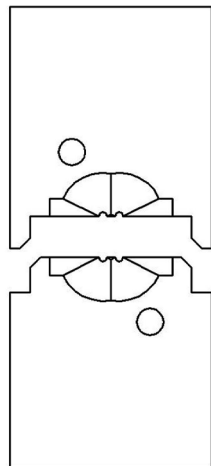
# PRO EFF ISO-STRIP 15 / 65 MACHINE SERIES

2 CONDUCTOR DRILLED DIE TYPE BLADES

- FOR MORE INFORMATION ON THESE BLADES, PLEASE CONTACT  
LAKES PRECISION, INC.

- SEND WIRE SAMPLES TO LAKES PRECISION, INC.

- *TC Coating Available* -



123265-X

ITEM NUMBER	DESCRIPTION
123265-X	2 COND. DIE TYPE BLADE