



LAKES PRECISION^{INC.}

Your Global Source for Wire Processing Perishable Tooling

MECAL MACHINE SERIES

THIS SECTION CONTAINS BLADES FOR MECAL PRESS MACHINE SERIES

Your Global Source for Wire Processing Perishable Tooling

www.lakesprecision.com

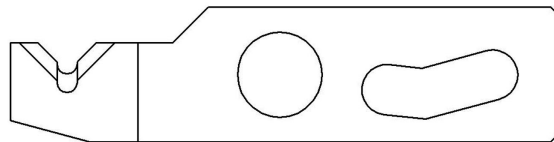
TRU-RADIUS STRIP BLADE

The sharp edge is ground to a half circle whose radius approximates awg wire size. The entry angle lines intersect the half circle at the quadrant points. This type of blade, when closed, presents a true circle profile.

Advantages: This type of blade is excellent for precise and clean jacket removal because it combines the scissor-like shearing action of the by-pass blade with the exact hole profile matching a conductor gauge. Excellent for thin wall cross-link PVC and most rubbery or elastic insulations (thin or thick wall).

Disadvantages: Shut height cannot be modified to process adjacent wire sizes. Off center wire condition has to be considered when choosing blade size.

- TC Coating Available -



122987-XX

ITEM NUMBER	OEM #	DESCRIPTION
122987-016	-----	TR-V STRIP
122987-028	791130014	TR-V STRIP
122987-034	-----	TR-V STRIP
122987-039	791130011	TR-V STRIP
122987-059	791130020	TR-V STRIP
122987-072	-----	TR-V STRIP
122987-079	791130015	TR-V STRIP
122987-095	-----	TR-V STRIP
122987-100	-----	TR-V STRIP
122987-112	-----	TR-V STRIP
122987-118	791130016	TR-V STRIP
122987-125	-----	TR-V STRIP
122987-157	791130017	TR-V STRIP
122987-180	-----	TR-V STRIP

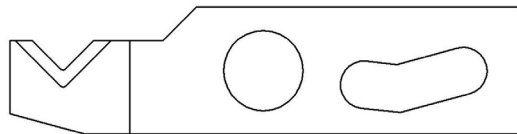
TANGENT RADIUS “V” CUT / STRIP BLADES

The sharp edge is ground to an arc whose radius approximates awg wire size. The entry angle lines meet the arc at a tangent point. This type of blade, when closed, presents a diamond shaped edge profile.

Advantages: By adjusting cutter head shut height, (if insulation material and wall thickness allow), you can process adjacent wire extrusions.

Disadvantages: Inadequate for processing thin wall and/or hard insulations such as cross-link or fiberglass jackets.

- *TC Coating Available* -



122580-XX

ITEM NUMBER	MARK	DESCRIPTION
1225801-1	R 0.15	TA-V CUT / STRIP
122580-2	R 0.5	TA-V CUT / STRIP
122580-3	R 0.75	TA-V CUT / STRIP
122580-4	R 1.0	TA-V CUT / STRIP
122580-7	R 1.2	TA-V CUT / STRIP
122580-5	R 1.5	TA-V CUT / STRIP
122580-6	R 2.0	TA-V CUT / STRIP
122580-8	R 0.35	TA-V CUT / STRIP