



LAKES PRECISION^{INC.}

Your Global Source for Wire Processing Perishable Tooling

EMBOAVA MACHINE SERIES

THIS SECTION CONTAINS BLADES FOR THE EMBOAVA MACHINE SERIES

Your Global Source for Wire Processing Perishable Tooling

www.lakesprecision.com

TRU-RADIUS STRIP BLADE

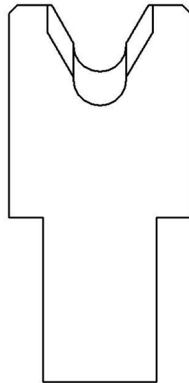
The sharp edge is ground to a half circle whose radius approximates awg wire size.

The entry angle lines intersect the half circle at the quadrant points. This type of blade, when closed, presents a true circle profile.

Advantages: This type of blade is excellent for precise and clean jacket removal because it combines the scissor-like shearing action of the by-pass blade with the exact hole profile matching a conductor gauge. Excellent for thin wall cross-link PVC and most rubbery or elastic insulations (thin or thick wall).

Disadvantages: Shut height cannot be modified to process adjacent wire sizes. Off center wire condition has to be considered when choosing blade size.

- TC Coating Available -



123750-XX

DIA MM SIZE	ITEM NUMBER	DESCRIPTION
3.5	123750-3.5	TR-V STRIP
5.3	123750-5.3	TR-V STRIP
6.3	123750-6.3	TR-V STRIP
6.8	123750-6.8	TR-V STRIP